



**State Water Resources Control Board
 Temporary Urgency Change Order (6/17/2022)
 Russian River Hydrologic Report
 October 28, 2022 - November 3, 2022**

Prepared as a requirement of the Order approving Sonoma Water's Petition for Temporary Urgency Change in Permits 12947A, 12949, 12950, and 16596 (Applications 12919A, 15736, 15737, and 19351).

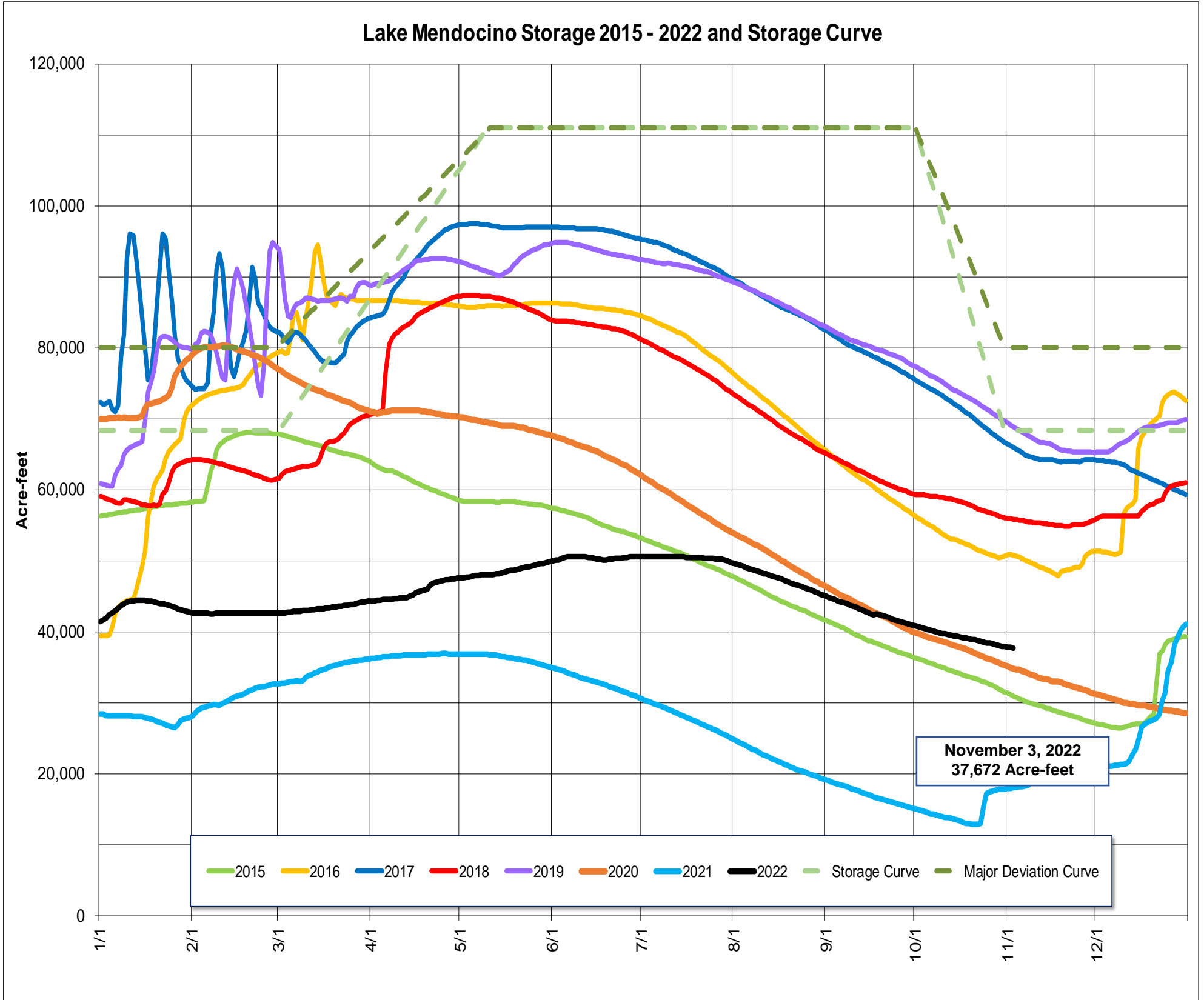
Instream Flow Requirements as of November 3, 2022

| Basis | Reach | Instantaneous (cfs) | 5-day Average (cfs) |
|--|---------------------|---------------------|---------------------|
| Modified Per Order: Critical Condition | Upper Russian River | 15 | 25 |
| D-1610: Normal Condition | Dry Creek | 105 | - |
| Modified Per Order: Critical Condition | Lower Russian River | 25 | 35 |

Upper and Lower Russian River based on criteria as established in the Order issued 6/17/2022.

Lake Mendocino

Lake Mendocino Storage 2015 - 2022 and Storage Curve

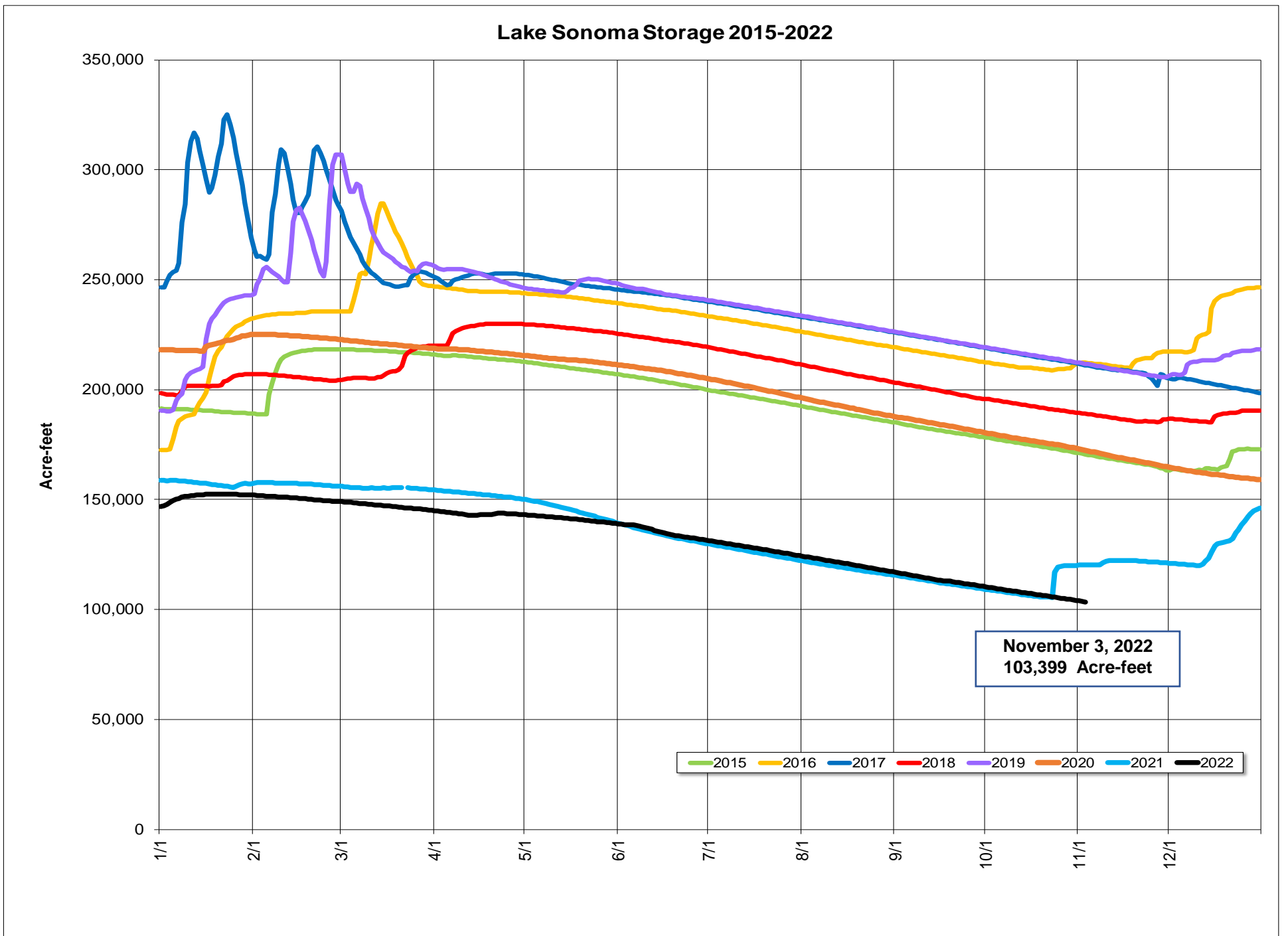


| | | | |
|-------------------------------|------------------|---------------|--------------------|
| Storage (acre-feet) | November 3, 2022 | 37,672 | |
| Change in Storage (acre-feet) | Last 30 days | -2,803 | Average Daily Rate |
| | Last 7 days | -584 | -83 |
| Daily Inflow (cfs) | Last 7 days | Min | 1 |
| | | Max | 34 |
| | | Mean | 13 |
| Release (cfs) | Last 7 days | Min | 50 |
| | | Max | 51 |
| | | Mean | 51 |

Lake Sonoma



Nathan Baskett, March 3, 2011



| | | | |
|-------------------------------|------------------|----------------|--------------------|
| Storage (acre-feet) | November 3, 2022 | 103,399 | |
| | | Total | Average Daily Rate |
| Change in Storage (acre-feet) | Last 30 days | -5,558 | -185 |
| | Last 7 days | -1,349 | -193 |
| Daily Inflow (cfs) | Last 7 days | Min | 0 |
| | | Max | 9 |
| | | Mean | 1 |
| Release (cfs) | Last 7 days | Min | 87 |
| | | Max | 112 |
| | | Mean | 100 |

Potter Valley Project

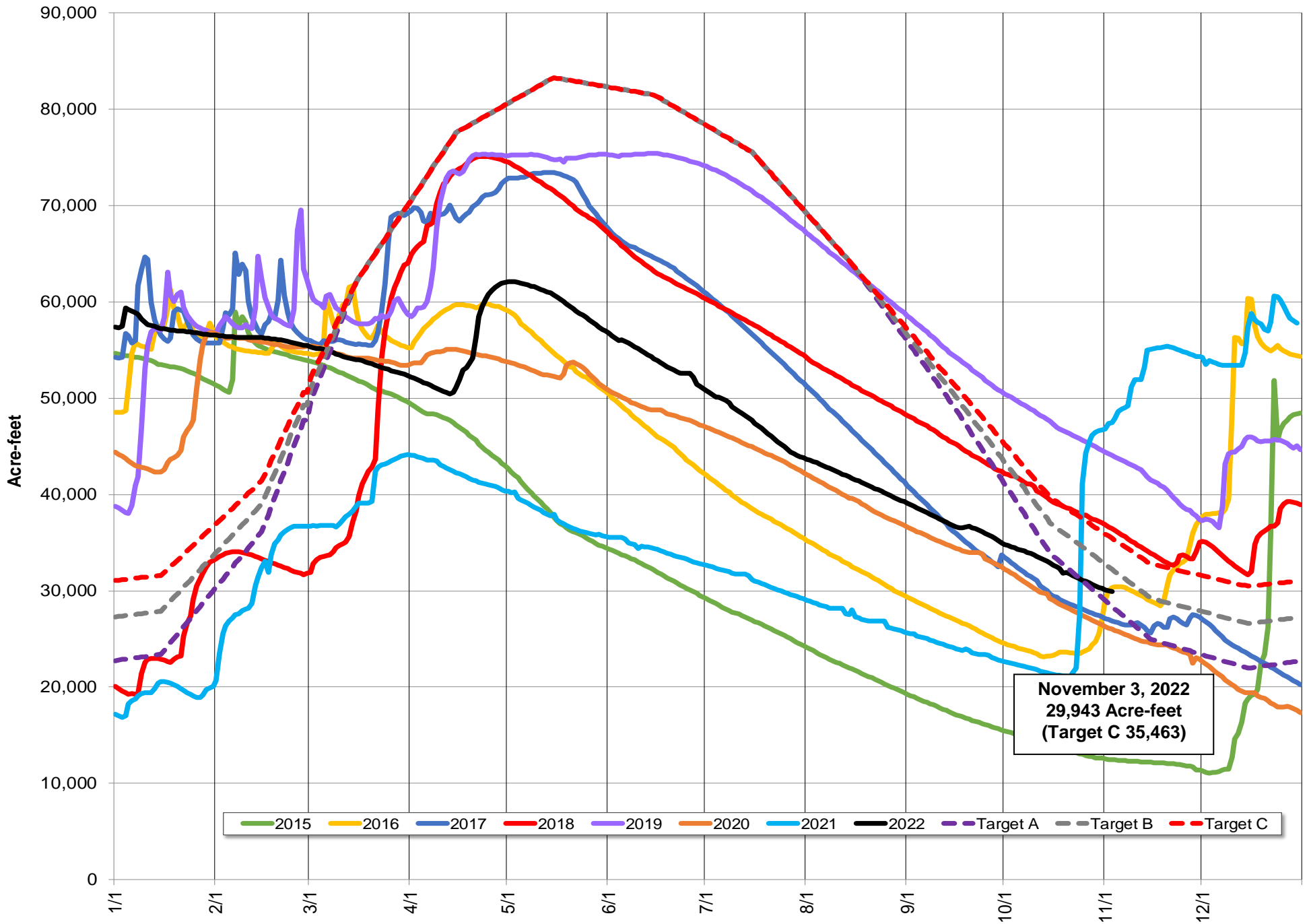
| | | |
|---------------------|------------------|----|
| PVP Diversion (cfs) | November 3, 2022 | 12 |
|---------------------|------------------|----|

Lake Pillsbury

| Parameter | Date Range | Cumulative | Daily Average |
|---------------------|------------------------------------|------------|---------------|
| Inflow* (acre-feet) | October 1, 2022 - November 3, 2022 | 1,420 | 42 |
| | Last 7 days | 214 | 31 |

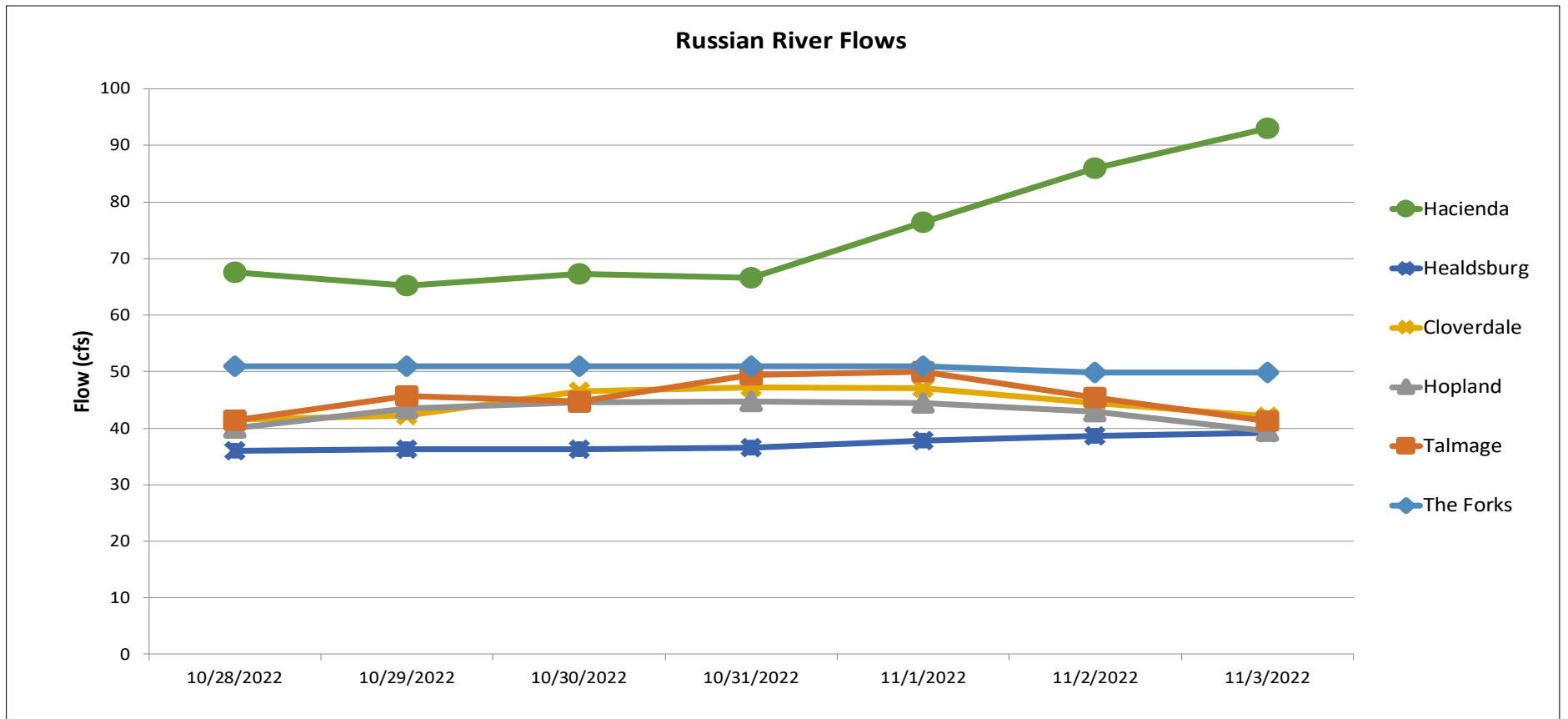
*Inflow calculation based on criteria established in D1610

Lake Pillsbury Storage 2015-2022 and Target Storage Scenarios

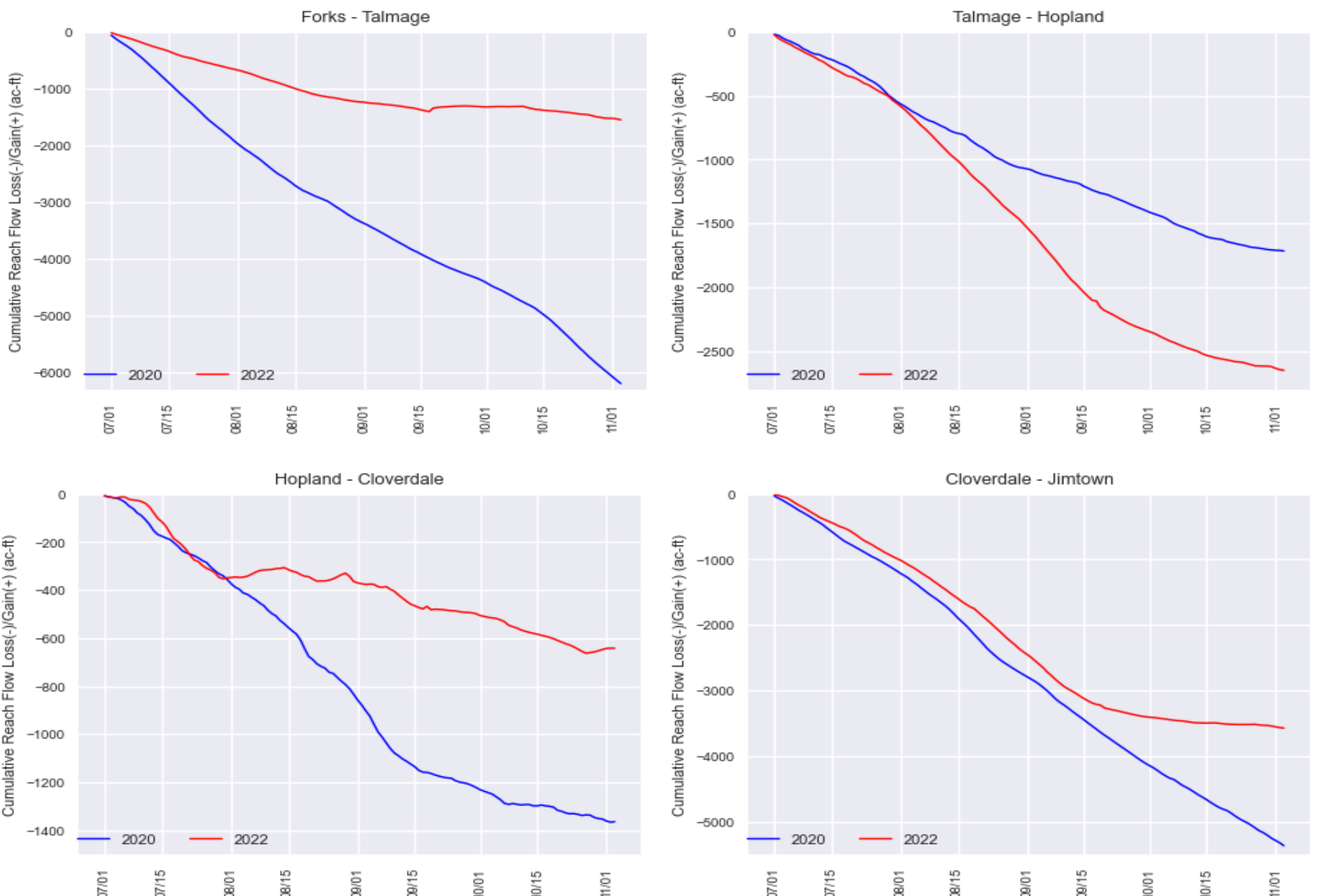


| Gage | 24-hr Average Flow (cfs) | | | | | | |
|-----------------------------|--------------------------|--------------|--------------|--------------|-------------|-------------|-------------|
| | Oct 28, 2022 | Oct 29, 2022 | Oct 30, 2022 | Oct 31, 2022 | Nov 1, 2022 | Nov 2, 2022 | Nov 3, 2022 |
| The Forks* | 51 | 51 | 51 | 51 | 51 | 50 | 50 |
| Talmage USGS 11462080 | 41 | 46 | 45 | 49 | 50 | 45 | 41 |
| Hopland USGS 11462500 | 40 | 43 | 45 | 45 | 44 | 43 | 39 |
| Cloverdale USGS 11463000 | 42 | 42 | 47 | 47 | 47 | 45 | 42 |
| Healdsburg USGS 11464000 | 36 | 36 | 36 | 36 | 38 | 39 | 39 |
| Hacienda USGS 11467000 | 68 | 65 | 67 | 67 | 76 | 86 | 93 |

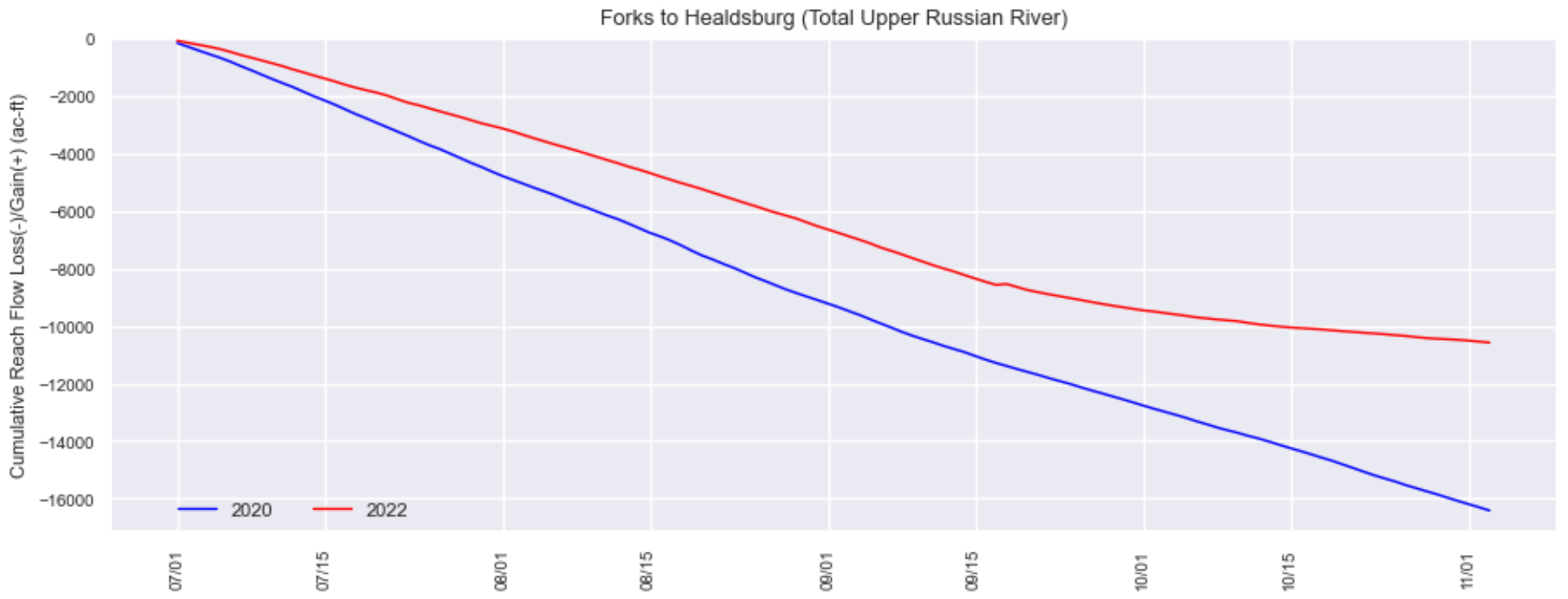
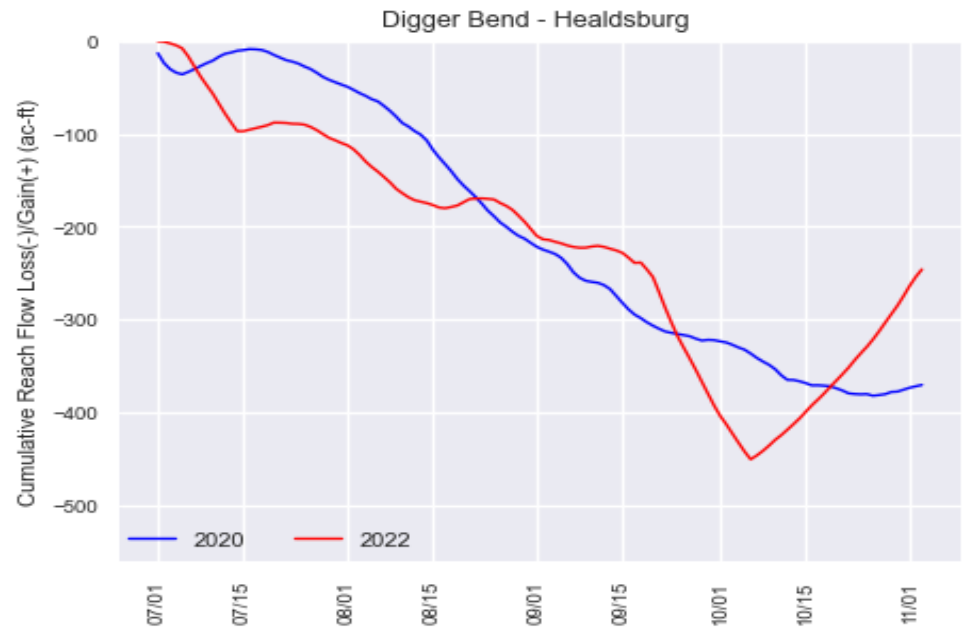
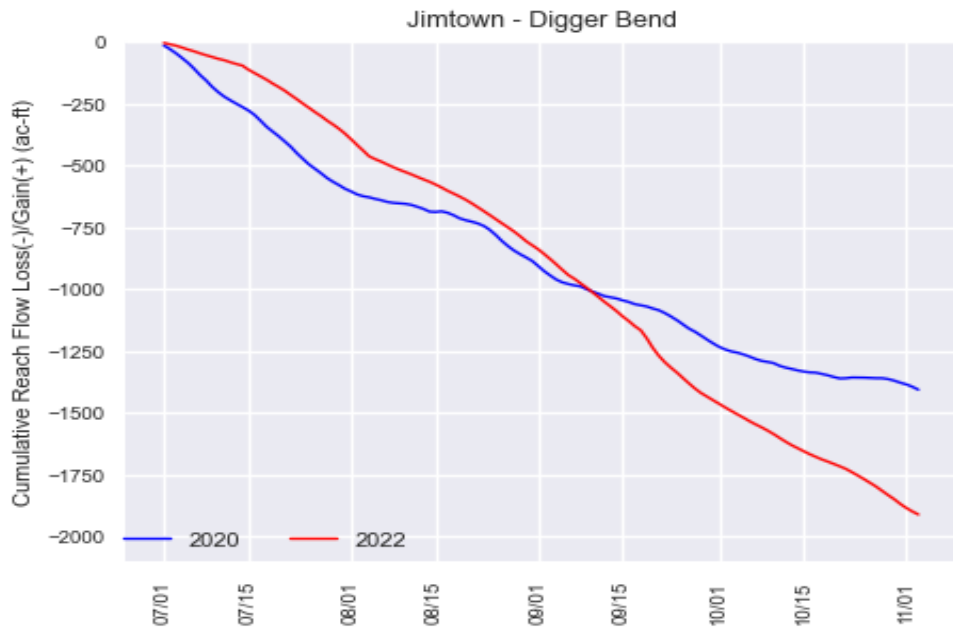
*West Fork(USGS 11461000) + East Fork (Coyote Valley Dam Release)



Upper Russian River Flow Gain/Loss (July 1, 2022 - November 03, 2022)

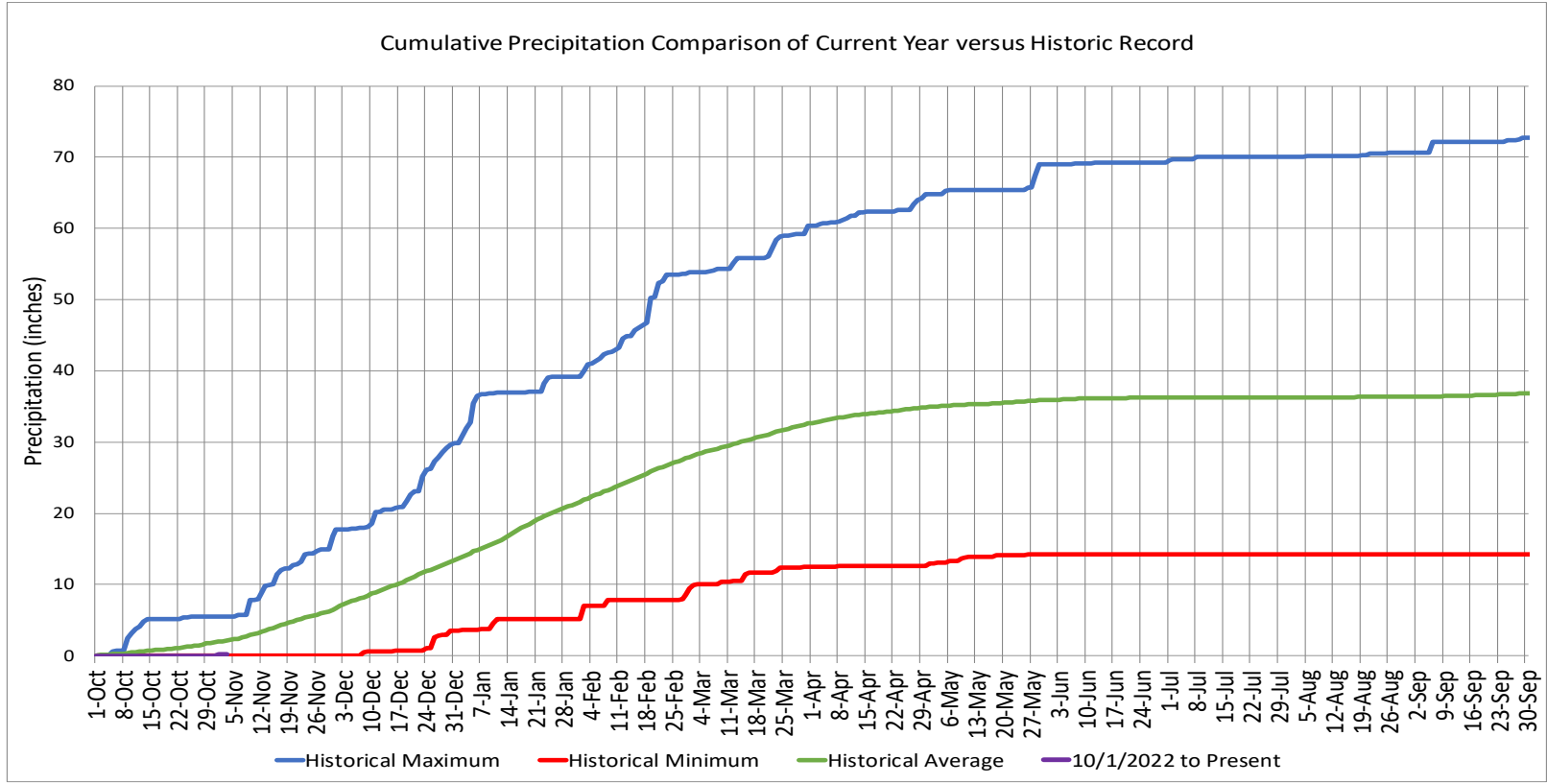


Upper Russian River Flow Gain/Loss (July 1, 2022 - November 03, 2022)



Precipitation

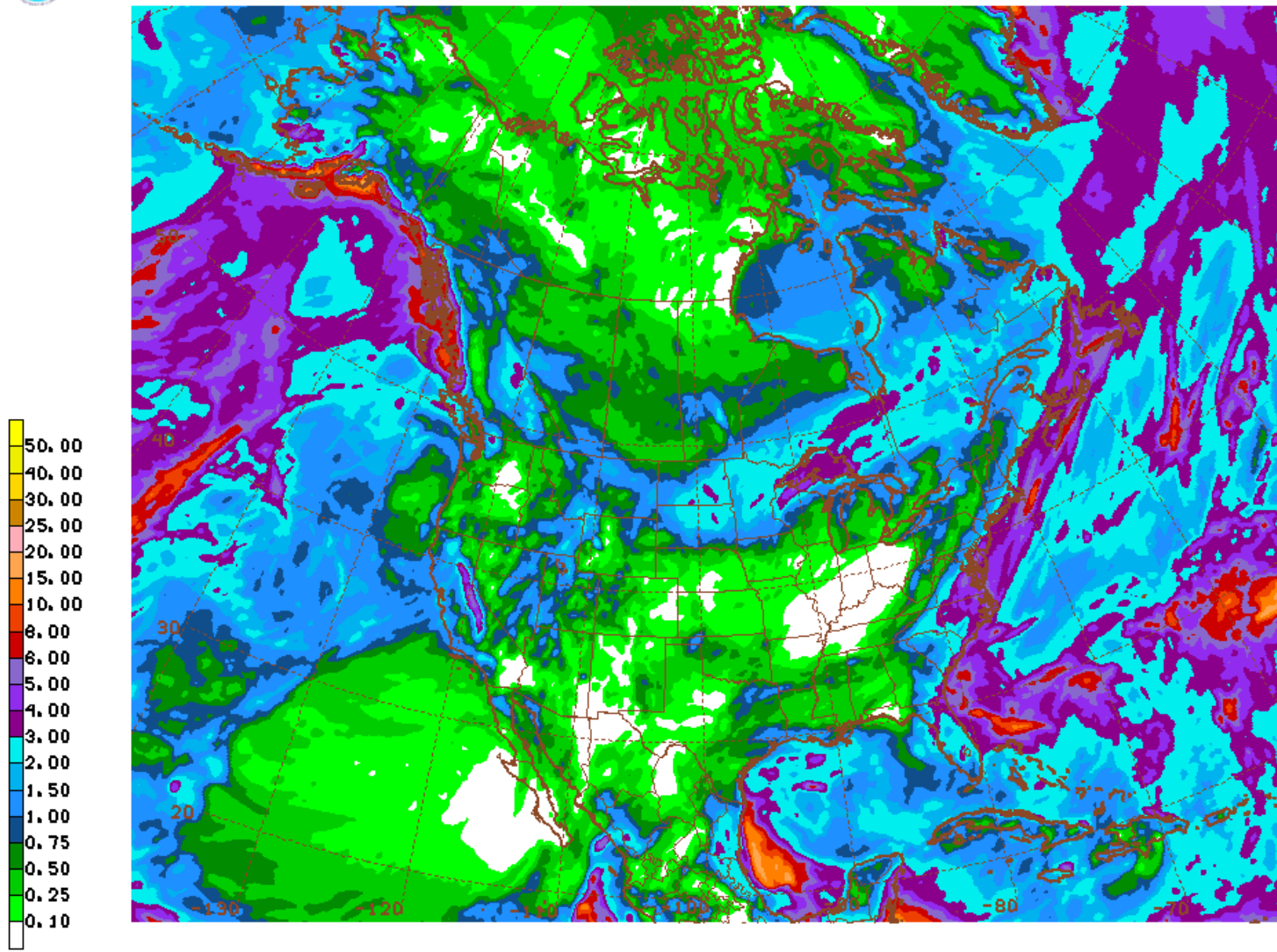
| Ukiah Municipal Airport (WBAN: 72590523275 (KUKI)) | |
|--|---------------------|
| Date Range | Cumulative (inches) |
| Oct 1, 2022 - Nov 3, 2022 | 0.22 |
| Last 7 Days* | 0.22 |



Global Forecast System Model 16-day Cumulative Precipitation Forecast



GFS 11/07/22 12UTC 384HR FCST VALID WED 11/23/22 12UTC NOAA/NWS/NCEP



GFS WED 221123/1200V384 384HR ACCUMULATED PRECIP (IN)

Date Range
Nov 7 - Nov 23, 2022

Forecasted Cumulative (inches)
2.09

Russian River Fisheries Monitoring

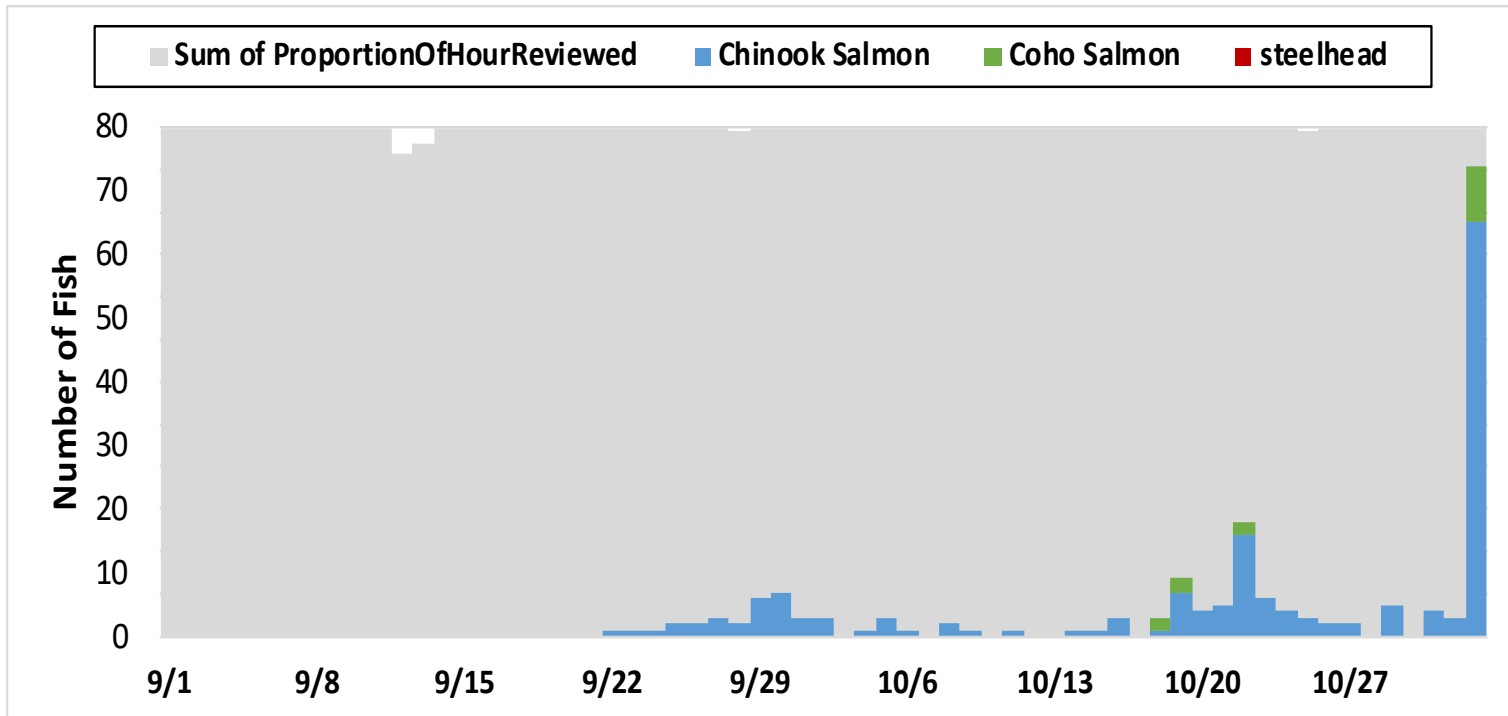


Figure 1. Number of adult salmonids and proportion of each day reviewed for video monitoring data collected at the Mirabel dam, 2022.

| Week | Chinook Salmon | | Coho Salmon | | Steelhead | |
|-------|----------------|---------------|-------------|---------------|-----------|---------------|
| | 2022 | 2000-2019 Avg | 2022 | 2000-2019 Avg | 2022 | 2000-2019 Avg |
| 09/01 | 0 | 0.05% | 0 | 0.00% | 0 | 0.65% |
| 09/08 | 0 | 0.14% | 0 | 0.00% | 0 | 0.65% |
| 09/15 | 0 | 0.24% | 0 | 0.10% | 0 | 0.71% |
| 09/22 | 10 | 0.59% | 0 | 0.00% | 0 | 0.93% |
| 09/29 | 22 | 6.10% | 0 | 0.30% | 0 | 1.30% |
| 10/06 | 8 | 3.57% | 0 | 0.61% | 0 | 1.30% |
| 10/13 | 10 | 13.30% | 0 | 1.73% | 0 | 2.35% |
| 10/20 | 43 | 13.66% | 6 | 3.05% | 0 | 1.42% |
| 10/27 | 79 | 17.31% | 9 | 1.12% | 0 | 1.27% |
| 11/03 | | 20.08% | | 4.47% | | 2.16% |
| 11/10 | | 9.73% | | 8.12% | | 4.88% |
| 11/17 | | 7.69% | | 23.45% | | 8.90% |
| 11/24 | | 3.37% | | 24.77% | | 14.83% |
| 12/01 | | 2.69% | | 7.51% | | 15.17% |
| 12/08 | | 0.74% | | 9.44% | | 15.76% |
| 12/15 | | 0.42% | | 8.83% | | 15.01% |
| 12/22 | | 0.22% | | 3.45% | | 9.24% |
| 12/29 | | 0.09% | | 3.05% | | 3.49% |

Table 1. Weekly totals of adult salmonids observed on the Mirabel dam video camera.